



**Powered by precision ... leading with innovation**

Since 1962



**THE POWER**  
is in our hand

# Index



About Al-Mailam & Shaalan Co.	2
Electrical Contracting Dept.	6
Mechanical Contracting Dept.	14
Commercial Dept.	16
Events & Seminars	30



## About Al-Mailam & Shaanan

### A Message from the Chairman

In the name of God, The Merciful, the Compassionate...

Fifty years of dedication and hard work to make what today is Al-Mailam & Shaalan Co. has given me tremendous satisfaction and experience. I am proud to say today that what started as a small company in Kuwait, is now one of the leading forces behind Kuwait's growth.

My first thanks be to God who opened the way, whom without, nothing is possible. My second thanks are to our customers, those who are loyal, those who came before and those who are yet to come and my third is to our dedicated team of employees who make every day at Al-Mailam & Shaalan Co. happen.



*Mahmoud Shaalan*

### About Us

Al-Mailam & Shaalan Co. was officially established in 1986, but our background dates back to 1962 when founders *Ahmed Al-Mailam* and *Mahmoud Shaalan* began a firm to meet the needs of a developing country. We are now one of the leading Electrical Trading and Contracting companies in Kuwait, dealing with all types of Electrical and Mechanical Engineering, contracting works and trading activities. We cover a wide range of electrical accessories that can be utilized both in building construction and general consumer use. Holding true to the original mission of meeting the needs of Kuwait's developing infrastructure, we revamped our "Vision" to be the leading source of electrical solutions in the new millennium!

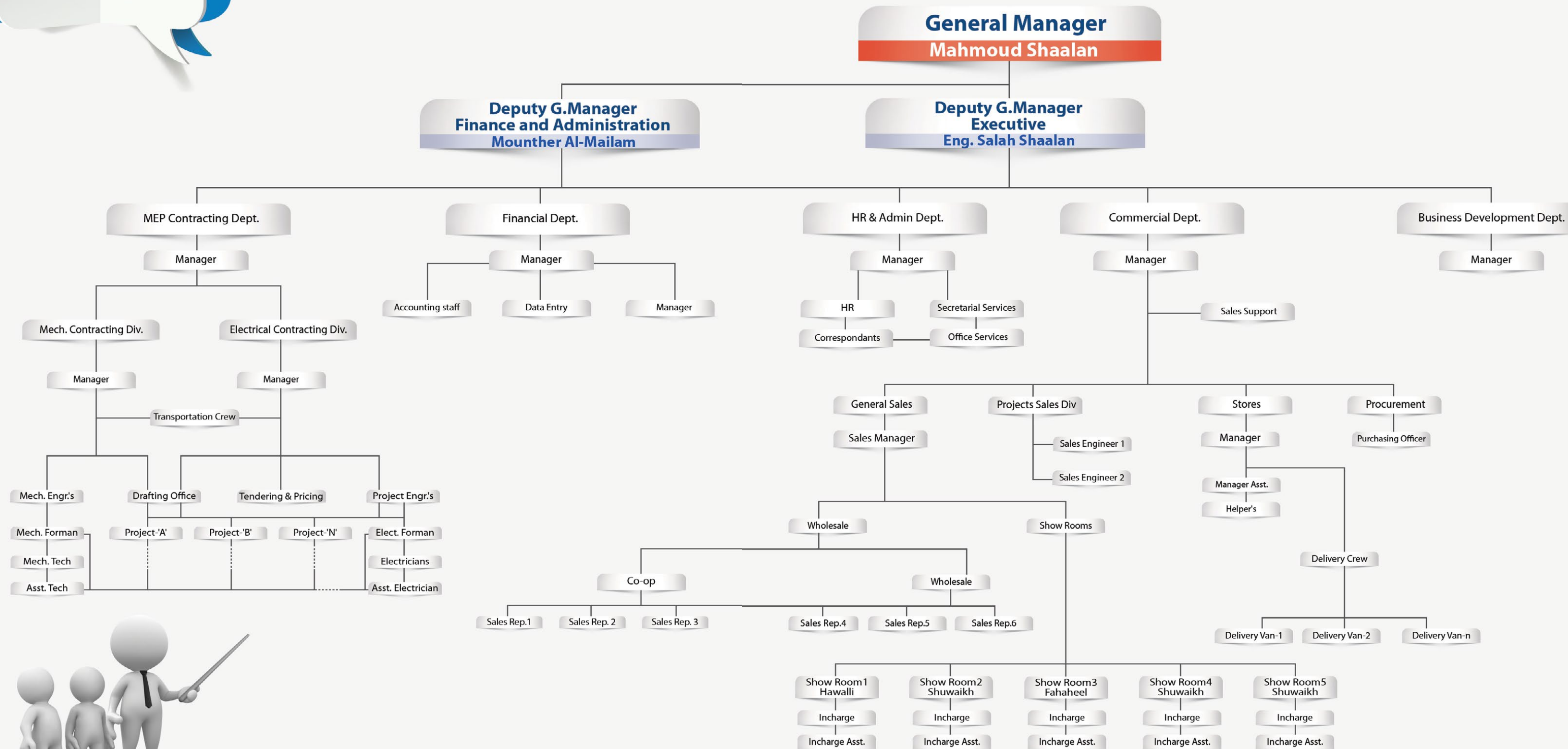
### Mission

To deliver quality and high level of professionalism in Kuwait's competitive market, while maintaining our strength in finding solutions to real world problems and demands. We aim to keep our clients satisfied to the highest level by implementing timely and customized solutions.

### Vision

To be the leading source of electrical solutions; leading and lighting the way for a brighter future in Kuwait's growing economy.

# Our Organization Structure





## Electrical Contracting Department

Being a grade 2 CTC classified electrical contracting company, we are dedicated and committed to deliver a high standard quality performance in all aspects of electrical and low current works.

Over the long years of experience this department has gained a great reputation for top quality performance. We give attention to every little detail of our work starting from our highly qualified engineers to our carefully selected electricians who are all dedicated to meet our objectives and expectations in delivering and keeping the high standards we are committed to.

### Our company's areas of specialty are:

- All types of electrical installations and contracting for commercial and industrial buildings with highly qualified and experienced engineers and electricians.
- Cable laying, jointing and termination, cable trays and trunking.
- Design and installation of electrical power distribution for electrical 240/415v power systems.
- Supply and installation of lighting systems.
- Supply and installation of diesel generator, motor control centers, synchronizing panels and ATS
- Supply and installation of bus duct systems.
- Supply and installation of lighting control dimming systems.
- Electrical installations in hazardous areas.
- Supply and installation of various low current systems including VOIP and telephone systems,
- Fire alarm with voice evacuation systems. Security and intruder alarm systems, CCTV, access control, public address and sound systems, nurse call system, master clock systems, A/V systems, IPTV, queuing systems and solar photovoltaic.
- System supply and installation of 11/0.415Kv transformer substation 1000, 1250 and 1600 KVA.
- Earthing and lightning protection systems.
- Central battery backup systems and UPS systems.
- VFD's, harmonic filters and capacitor banks.



### Some of our projects in Kuwait

- 1- Al Amiri Hospital - The new expansion project - Sharq
- 2- City Center - Shuwaikh
- 3- Dasman Tower - Sharq
- 4- Al Nafisi Tower - Qibla
- 5- Bowling Center - Salmiya
- 6- Jassim Tower - Mirqab
- 7- KREIC Tower - Sharq
- 8- Mazda & Peugeot Show room - Al-Rai
- 9- Al Manaa Tower - Salmiya
- 10- Al-Thuraiya Complex - Salmiya
- 11- Qatar Embassy - Aldiyaa
- 12- Sultan Center - Various branches
- 13- Kuwait Finance House Showroom - Dajeej
- 14- Kuwait Insurance Company - Qibla
- 15- NBK - Various branches
- 16- Burgan Bank - Various branches
- 17- Bobyan Bank - Various branches
- 18- Alahli Bank - Various branches
- 19- Ahli United Bank - Safat
- 20- Automated system Co. - Shuwaikh free zone
- 21- United Nation House - West Mishref
- 22- NBK Ghornata Wedding Hall - Ghornata
- 23- American University of Kuwait - Salmiya
- 24- Operation Building for Al-Razi Hospital
- 25- Jahra Clinic Type-20 - Jahra
- 26- Kindergarten & Primary School - Jaber Al-Ali
- 27- Gulf Cable Factory - Various manufacturing facilities
- 28- Russian Missile Stores - Um Al-Rous
- 29- Driving Learning School - Shuwaikh
- 30- Al-Ghanam Auto world - Shuwaikh
- 31- Administration Building of Automated System Co. - KFTZ
- 32- Al-Mailam Wedding Hall - Audailiya
- 33- Social Security Center - West Mishref
- 34- Kindergarten Type-105 - Hadiya





## Al Amiri Hospital The New Expansion Project

The project's location is in the premises of the main Al Amiri Hospital building in Sharq area. The new building will consist of 10 floors and 4 basements accommodating 415 beds and more than 650 cars. We at Al-Mailam & Shaalan Co. are using the most advanced and efficient technology in executing this project. We are well-known for delivering the best level of precision and quality, thus maintaining our reputation which goes back to more than 30 years.

Our scope of work in this project covers not only all types of Electrical work but it also covers the following L.V. systems:  
Fire Alarm, Lightning Protection, Master Clock System, Nurse Call system, Audio Visual system, CCTV, Structural Cabling, Security System, Queuing System, IPTV, Access Control system, Integrated Services, Solar Photo Voltaic System.

## Projects Photo Gallery

City Center Shuwaikh



Bowling Center-Salmiya



Al Thuraya Complex-Salmiya



Sultan Center





# Projects Photo Gallery

KRIEC Tower



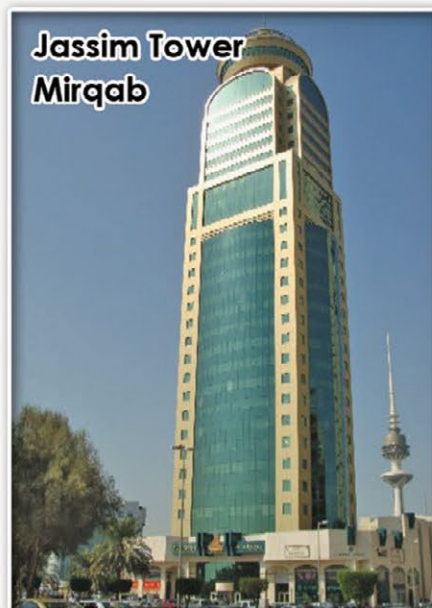
Al Nafisi Tower



Al Manaa Tower



Jassim Tower  
Mirqab



Dasman Tower



NBK Various Branches



AUB



Bobyar Bank



Burgan Bank



Al Ahli Bank



KFH





## Projects Photo Gallery

**Qatar Embassy - Daiya**



**Automated System Co. - free zone**



**Kuwait Insurance Co.**



**Mazda & Peugeot Showroom - Al Rai**



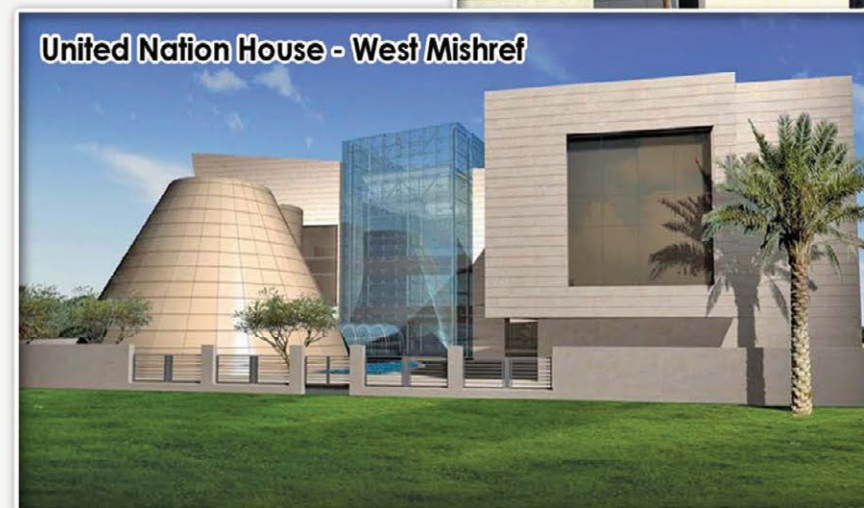
**NBK Social Hall - Ghornatah**



**AUK - Salmiya**



**United Nation House - West Mishref**





## Mechanical Contracting Department

Our Mechanical Contracting Department is specialized in all types of mechanical works with special dedication and focus on the mechanical maintenance of various natures, in addition to a special experience in substations, generators and pumps' maintenance.

We are also specialized in designing and implementing preventive maintenance programs applying different management tools.

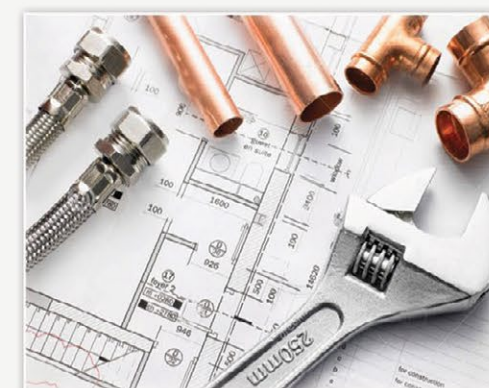
### Our Mechanical Department specializes in the following:

- Design & Engineering of mechanical systems.
- Installation & maintenance of HVAC.
- Installation & maintenance of diesel generators.
- Installation of air compressors and pumps.
- Installation of pump and sewage stations.
- Installation of above ground and underground fuel tanks.
- Installation of complete fuel stations - mechanical & electrical.
- Installation & maintenance of plumbing systems.
- Installation & maintenance of central water heater.
- Installation & maintenance of overhead cranes.
- Installation & maintenance of sliding doors & shutters.
- Installation & maintenance of gate barriers.
- Maintenance of car wash & hydraulic equipment.
- Electro-mechanical services & maintenance.



### Some of our projects in kuwait:

- Ministry of Education - Maintenance of electrical and mechanical systems - Various locations.
- Kuwait Municipality - Hawally Governorate.
- Kuwait Municipality - Farwaniya Governorate.
- Kuwait Fire Brigade - Various locations.
- Ministry of Defense - North Area.
- Ministry of Defense - South Area.
- Ministry of Defense - Al Shaheed Brigade 35





## Commercial Department »»» our products

The company deals with all types of building related electrical materials as well as consumer items with a trading experience that goes back to 1962. We are known in the market for "quality/value for money" products, reliability and sincere business relationships; our main objective is to gain customer satisfaction.

**In our commercial operation, we target three sectors in the market:**

### Retail

This sector reaches to the regular consumer directly through our retail shops which are conveniently located in different areas in Kuwait.

### Wholesale

This sector is led by a team of highly experienced and skilled sales people and a network of representatives focusing on the following market segments:

- Cooperative Societies
- Supermarkets and big department stores
- Distribution to electrical shops and outlets

### Project Sales and Tendering

This is a more focused and specialized division targeting special clients and bigger organizations at a higher and more professional level such as:

- Participating and bidding for C.T.C, "Central Tendering Committee".
- Covering all ministries and governmental agencies.
- Covering real estate, facilities management companies and hotels.
- Covering industrial and oil sector.
- Covering electrical contracting companies supplying their projects with our electrical materials.
- Coordinating with consulting offices for specifying our products.

## Our Partners:

### Wiring accessories & isolator

**CONTACTUM**  
Make The Switch

**SCAME**  
electrical solutions

**EDISON**  
ELECTRICAL ACCESSORIES

### Electrical Conduits & Accessories

**DECODUCT**  
CABLE MANAGEMENT SYSTEMS

**ITCC**  
GI Conduits

### Industrial plugs & Sockets

**SCAME**  
electrical solutions

### LED lighting down lights, Bulbs & Fittings

**supreme**

**TOSHIBA**  
Leading Innovation >>>

**Goodlite**

**E-LITE**  
LED & LIGHTING TECHNOLOGY SOLUTION

### Residential & industrial exhaust & vents

**aspira**

**Sinar**

**CAPITAL**

**Shams**

### Electrical wires & Cables

**INNET** **BRITISH CABLE**  
MANUFACTURER

**SILTEK**  
S.P.A. SILICONE TECHNOLOGY

**Maxim**  
Turkish wire

### Distribution Boards, & Enclosures & Electrical Components

**CONTACTUM**  
Make The Switch

**ELETRA**  
Safety for Life

**ELMARK**  
The Brand of Electricity

**DECODUCT**  
CABLE MANAGEMENT SYSTEMS

### Bus Duct system

**POWERDUCT SERIES**  
EXTRUDED ALUMINUM HOUSING WITH COOLING FIN  
Busduct System



## Commercial Department »» our products

# CONTACTUM

Make The Switch

A leading British manufactured brand of electrical wiring accessories and domestic circuit protection equipment. The Contactum name is a "hallmark" for excellent quality, reliability and value. With these attributes Contactum has had an impressive growth record in recent years thanks to happy and satisfies customers.



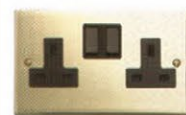
**Aspire Moulded -**  
modern curved edge profile  
with matching Grid range.



**Ceiling & Auxiliary -**  
including; pendants,  
lampholders, junction boxes,  
dry lining boxes & metal boxes.



**Metal Clad -**  
suitable for tougher commercial  
& domestic environments.



**Georgian & Edwardian -**  
rope & plain edge solid brass  
10mm depth plate.



**Lyric -**  
screwless easy-clip metal 6mm  
depth plate.



**Traditional Moulded -**  
square edge classic profile.



**Splashproof - IP66**  
protection against dust &  
water - for use outdoors &  
potentially hazardous areas.



**Reflect -**  
sleek curved edge profile, metal  
9mm depth plate.



**iConic -**  
square contemporary profile,  
slim, metal 4.5mm depth plate.



**LV Distribution -**  
single phase & 3 phase  
distribution & control products.

# DECODUCT®

## CABLE MANAGEMENT SYSTEMS

DECODUCT Cable management systems include conduits, trunkings, accessories, industrial cable management systems in PVC & metal are manufactured to meet the Gulf specifications as well as International standards.

DECODUCT Cable management systems have won the Diamond Mark certificate from ASTA BEAB of the UK confirming their compliance with the relevant BSEN standards. ASTA BEAD is the reputable and relevant UK Certification Body for electrical products.

DECODUCT LSE cable management systems meet all the mechanical and physical properties of rigid CMS and in any event of fire, the emission of the smoke and fume is within safety levels and much lower than normal rigid CMS.



# ip EDISON

## ELECTRICAL ACCESSORIES

EDISON range of products include various ranges of Switches. Sockets and Electrical Wiring Devices & Accessories. The range from Edison switches come with breathtaking and exotic designs, we pride ourselves in our ability to satisfy every customer desire.

Edison accessories are manufactured to Gulf and international specifications.





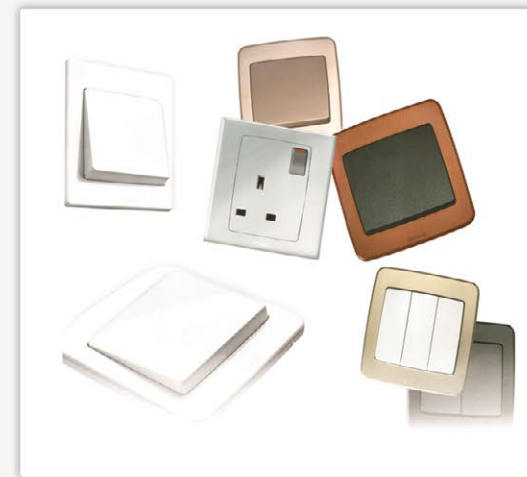
## Commercial Department »» our products



SCAME produces over 15000 articles designed to meet the latest international (IEC), European (CEI) standards. These include a wide range of components and systems for electrical installations, suitable for industrial and non-industrial purposes. Modern equipment, robotized assembly work and painstaking quality control guarantee a product that is both reliable and technologically advanced.



Scame luxury wiring accessories



Scame Nexta wiring accessories



Scame Protecta weatherproof accessories



For years SCAME has been offering a wide range of high-quality industrial plugs and sockets complying with EN 60309-1 and 60309-2 European standards, gaining a leading position in the domestic and export markets. SCAME's industrial plugs and sockets are reliable, robust, easy to wire and provide outstanding resistance to weathering and to chemicals. All of which assures safe operation, even in the most adverse environmental conditions.

The main purpose of the standards is to prevent accidental or deliberate mismatching of plugs and connections which are not compatible in terms of voltage, current, frequency, polarity and type of use, which might therefore cause personal harm as well as damage to the electric appliances which they connect.





## TOSHIBA

Leading Innovation »»»

### LED Lighting

Toshiba International Corporation's LED Lighting Systems Division provides the highest quality LED lamps, fixtures, and components in the lighting industry. Toshiba's world class electronic and semiconductor technologies, combined with over a century of lighting experience, make Toshiba an emerging world leader in solid-state lighting. Our LED lighting products are mercury free and offer reduced CO2 emissions through energy savings when compared to current lighting.



### Energy Saving Lamps

Compact fluorescent lamp technology has progressed dramatically through advancements in design, and dedicated efforts to achieve further energy efficiency, and consumer satisfaction. Toshiba lamps assist in the reduction of electricity consumption, with usage levels reduced by around 80% in comparison with incandescent lamps. Toshiba is a worldwide recognized name, and you can be sure you're buying top quality technology.

## Goodlite

### Perfect Lighting Solutions

As a lighting expert, UNITED U-LI GOODLITE SDN BHD does not only provide lights and accessories. It also advises and consult clients on their specific lighting needs.

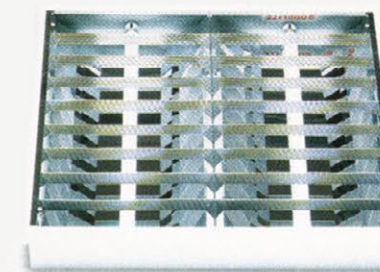
This is because different clients may require different lighting solutions to suit their individual requirements. As an endorsement to the company's capabilities, UNITED U-LI GOODLITE SDN BHD is registered with BM Trade of the United Kingdom.



Weatherproof lighting fitting



Florescent T5 and T8 lamps



Indoor lighting fittings



GI Floor Box



## Commercial Department »»» our products

سوپریم  
supreme

Supreme is our own brand for customers who target top quality products without having to pay too much, we tend to get the most out of the manufacture to provide our customers with top quality products at an affordable prices.

### LED Lamps & Filings



### Energy Saving Lamps



### Other Products



## POWERDUCT SERIES

EXTRUDED ALUMINUM HOUSING WITH COOLING FIN

Busduct System

### Fully Type Tested

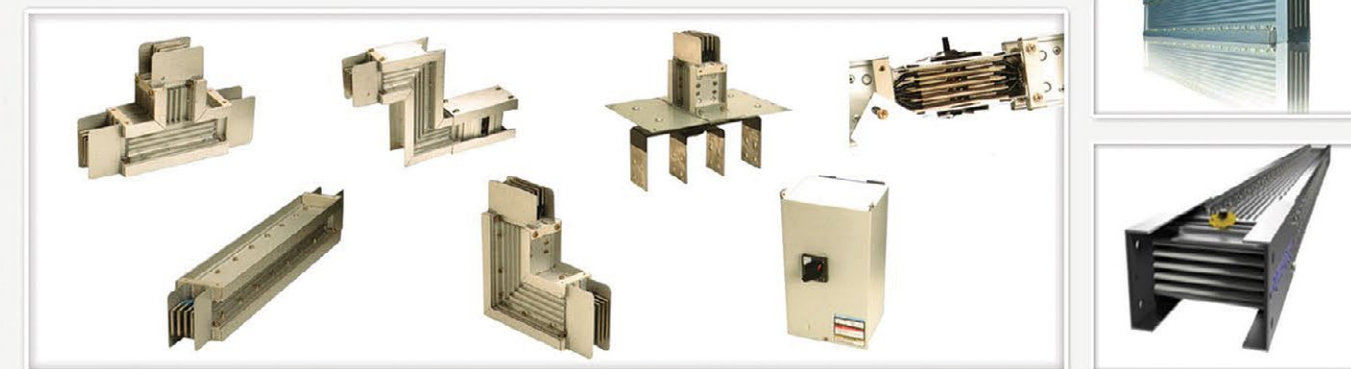


Busduct, also known as busway or busbar trunking system, is an electrical power supply distribution system that seamlessly distributes power from one end of the building to another. A key advantage of busduct is its flexibility and adaptability to a wide range of requirements, which allows our customers to benefit from designs that are tailored to their requirements.

Powerduct® is manufactured in the form of bus bar conductors enclosed with housing (extruded aluminum with housing fin). PPB's busducts are round conductors enclosed with Epoxy and Mylar class B forms of insulation. Other classes of insulation category are also available.

Our busduct systems fulfil four different applications: single loads, multiple loads, riser, and service entrance. Each application is designed according to site specific requirements, and must all fulfill our objectives of providing our customers with a low-cost, flexible system that is easy to maintain but does not compromise on key safety features.

High flexibility and versatility  
Superior electrical design: low impedance, higher short-circuit system and lower electromagnetic generation  
Light weight for quicker and easier installation, saving time and labour costs  
Improved safety  
Low-cost maintenance  
Reliable and dependable





### Residual current protection RCD's & MCB's



LED Lighting Lamps



Exterior Lighting



LED Downlight Fixtures

Linnet Cable presents the best of British technology and cable making expertise, in its state of the art manufacturing facility, situated in the heart of British steel-belt Sheffield.



**DATA/LAN CABLES**  
CAT7/CAT6A/CAT6/CAT5E  
MULTICORE SHIELDED CABLES

**INDOOR TELEPHONE CABLES**  
CW1308/CW1293/CAT3

**OUTDOOR TELEPHONE CABLES**  
JELLY FILLED, CCP-LAP, ELAKY

**CONTROL & INSTRUMENTATION CABLES**  
SIGNAL & CONTROL, BS5308, LIYCY

**CO-AXIAL CABLES/CATV/MATV**  
RG6/RG59/RG11 ETC.

**AUDIO & VIDEO CABLES**  
VGA CABLES

**MICROPHONE CABLES**

**SPEAKER CABLES**

**FIRE RESISTANT CABLES**

**DROP WIRE/FIRE ALARM/  
JUMPER WIRE/  
ALARM CABLES**





## aspira

Founded in 1940 in Italy ASPIRA S.r.l. (part of FANTINI COSMI INDUSTRIE group) is a modern and dynamic company with National, European and International interests. The company offers a complete range of domestic and industrial ventilation products, able to meet the most demanding requirements. With a total dedication to the service combined with production and inspiration to the principles of complete quality, ASPIRA is one of the most reliable and flexible partners in the air treatment field.

## Domestic ventilation



Auto shutter exhaust fan



Modern look Indoor exhaust fan



Centrifugal fans for duct application

## Industrial ventilation



In-line centrifugal fans



The ASPIRMEC series axial fans for industrial use



The AVP series axial for industrial use



## Silicon and specialized wires from Italy



Silicon 1 Core/3 Core



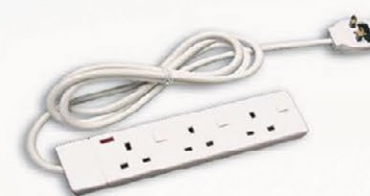
Silicon/PVC



Silicon/ Silicon



The LGA-electric range of power and cable management products manufactured to the latest British & European standards is the most diverse and dynamic range in the UK! Offering every variation imaginable of extension leads and anti-surge products along with the facility to manufacture leads to your specification here in the UK!



Rely on KISTENMACHER A German made products that meets your industrial and electrical needs and definitely win you trust.



Extension Reel



Residential Doorbell



Screwdriver Electrical Tester



School Doorbell



Pvc electrical connectors



## Events and Seminars

In order to stand out and be successful in our business we need to transfer the product information and knowledge to the people who are going to deal with and use these products. For that purpose, we hold seminars and training sessions on a regular basis.

We at Al Mailam & Shaalan Co. believe that our employees are the main assets of the company and they are our partners of success. We also believe that having more personal relationship with our employees helps in creating a friendly and more positive work environment. That's why we organize an annual Ramadan Iftar Event and other get together activities to help break the ice and strengthen the bonds among each other. This tends to increase teamwork spirit and motivate them to keep delivering high end quality performance to our customers, thus achieving our company's goals and objectives.





## Events and Seminars



## Our Head Office Location







Electrical Materials Trdg. & Contg. W.L.L. لتجارة الأدوات الكهربائية ومقاولاتها ذ.م.م



#### Head Office

Behbehani Complex 2nd floor, Jaber Al-Mubarak Street, Sharq, Kuwait city  
(Across from Al-Hamra Tower) P.O.Box 2355 Hawalli, 32024 - Kuwait  
Tel.: +(965) 22412750 Fax : +(965) 22458315  
www.mailam-shaalan.com Email : Info@mailam-Shaalan.com

#### Showroom(1) Hawalli

Hawalli, Tunis Street, Electrical Market opposite Al-Rihab Complex  
Tel./Fax : +(965) 22630148 - Ext. 201

#### Showroom(2) Al-Shuwaikh

Electrical Market, Al-Shuwaikh  
Tel./Fax : +(965) 24916575 - Ext. 202

#### Showroom(4) Al-Shuwaikh

Electrical Market, main street, Crystal Mall 2, Al-Shuwaikh  
Tel./Fax : +(965) 24847936 - Ext. 204

#### Showroom(5) Al-Shuwaikh

Al-Shuwaikh, Electrical Market Al-Ghannam building  
Tel./Fax : +(965) 24831393 - Ext. 205

#### Warehouse

Sulaibiya, Agility 24/6 - Tel.: 24670656 - Ext 210

#### Email ID by Department

<b>Electrical</b>	: elect@mailam-shaalan.com
<b>Mechanical</b>	: mech@mailam-shaalan.com
<b>Sales</b>	: sales@mailam-shaalan.com
<b>Project sales</b>	: proj.sales@mailam-shaalan.com
<b>Purchasing</b>	: purchasing@mailam-shaalan.com
<b>Accounting</b>	: accounts@mailam-shaalan.com
<b>Career</b>	: jobs@mailam-shaalan.com
<b>Administration</b>	: info@mailam-shaalan.com